



PRIMS-Plant Efficiency Reporter

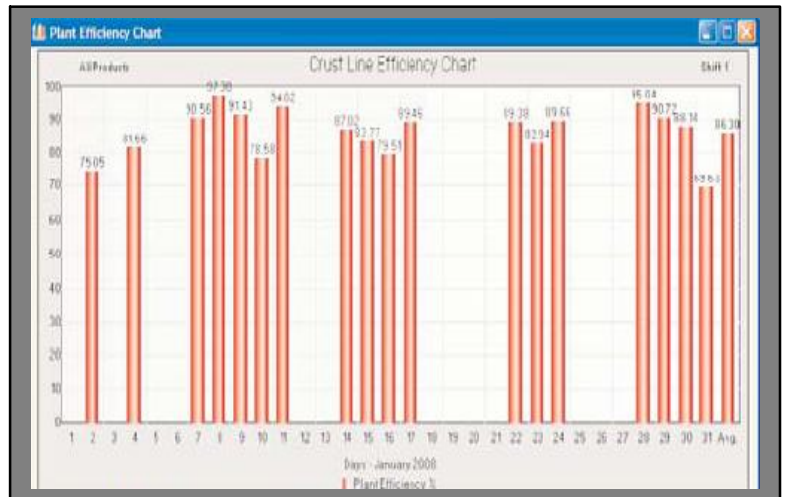
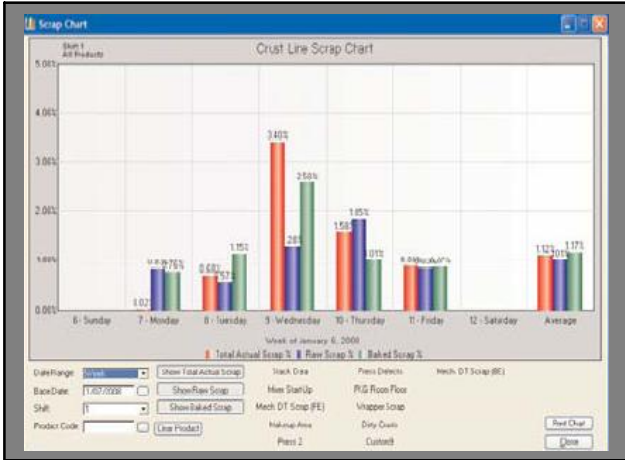
Forget Excel, Create Customized Reports in Minutes!

[in](#)

Concert with PRIMS or Stand Alone

Reports In Seconds!

Enter in your production results, downtimes, and scrap values, and get efficiency and downtime reports and graphs in seconds!



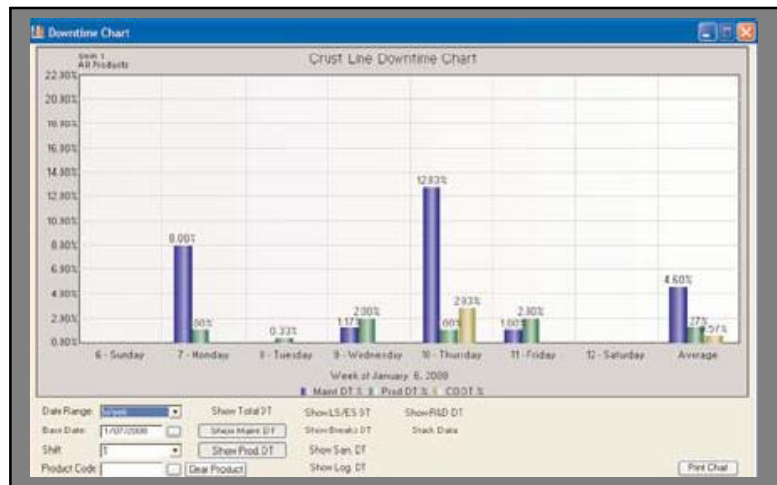
- Data Collection Reporting Tool !**
- Measures Efficiency and Downtime !**
- Easy to Use !**
- User Customizable for any Plant !**
- Increase Production Efficiency !**
- Can be Linked to PRIMS !**

Stop wasting time with Excel.

This Efficiency Reporting Software, can be easily configured for any plant with multiple production lines.

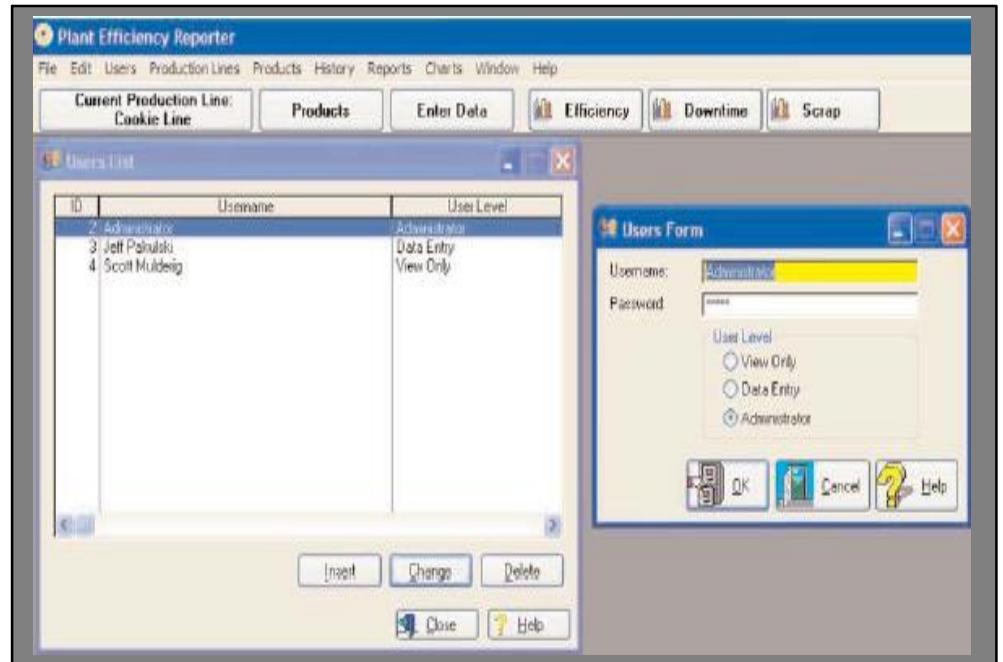
After its set-up, you will be capable of creating reports each week in a minute or two.

Linked with PRIMS, you can use this data to increase production efficiency in the future.

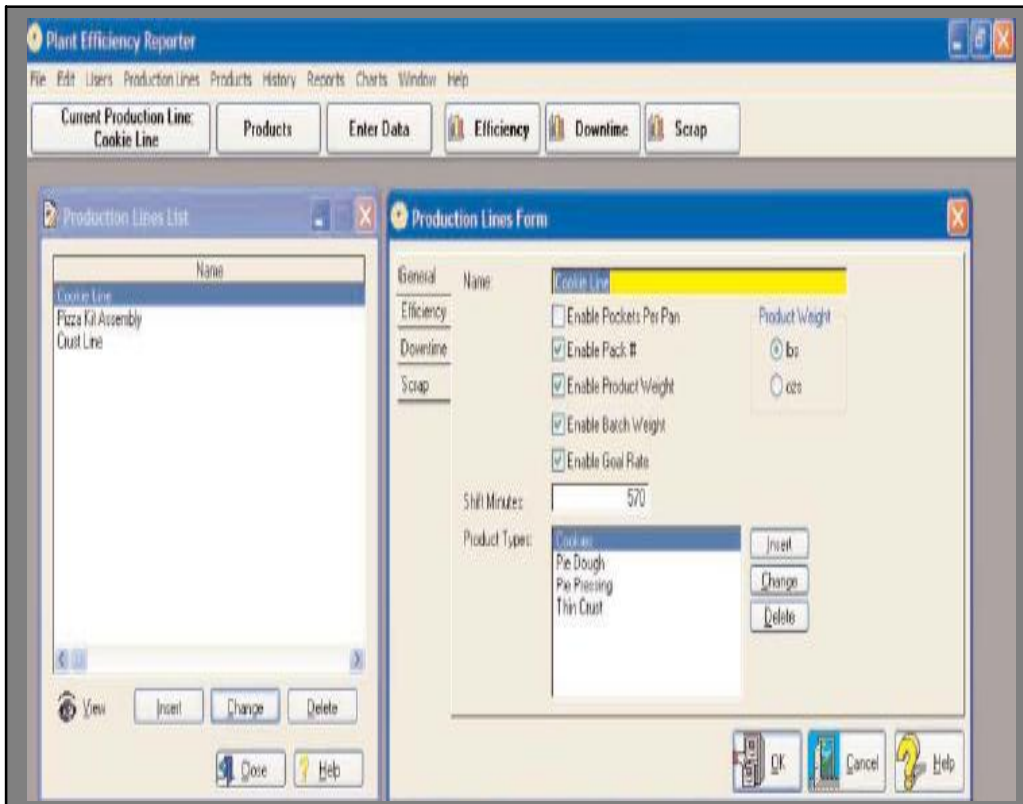


Get Reliable and Precise Reports of your Production Process

Set-Up the Users and Their Permissions



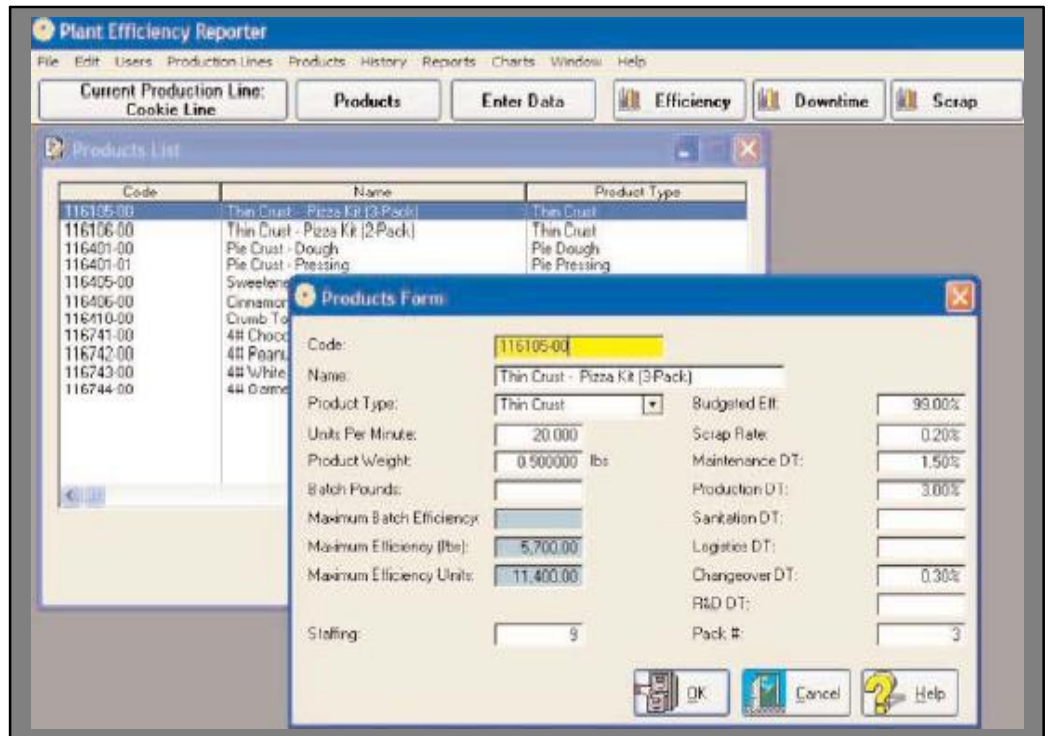
then



↔ Set-Up the Production Lines and Properties

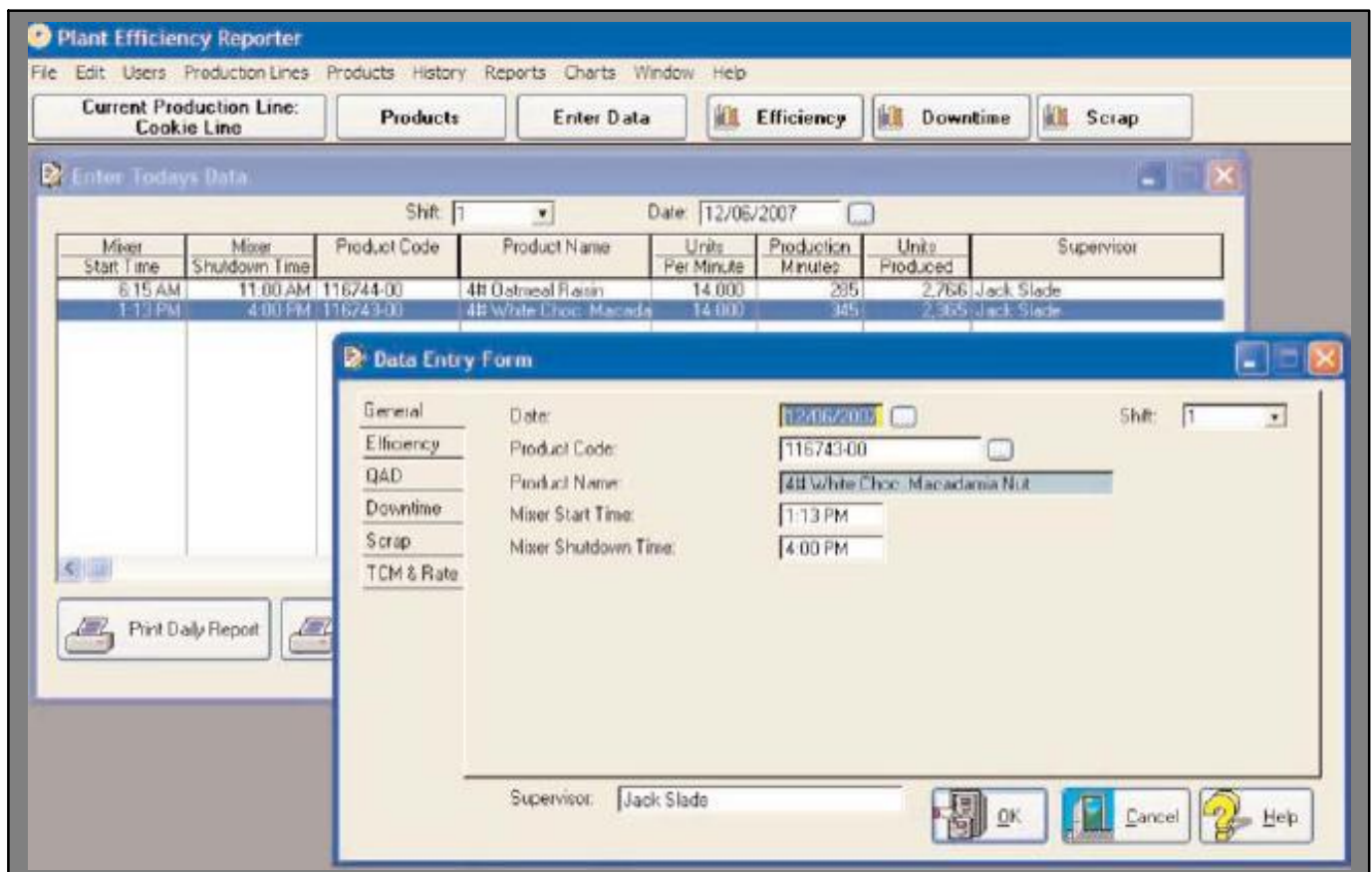
then

Set-Up the Product Properties



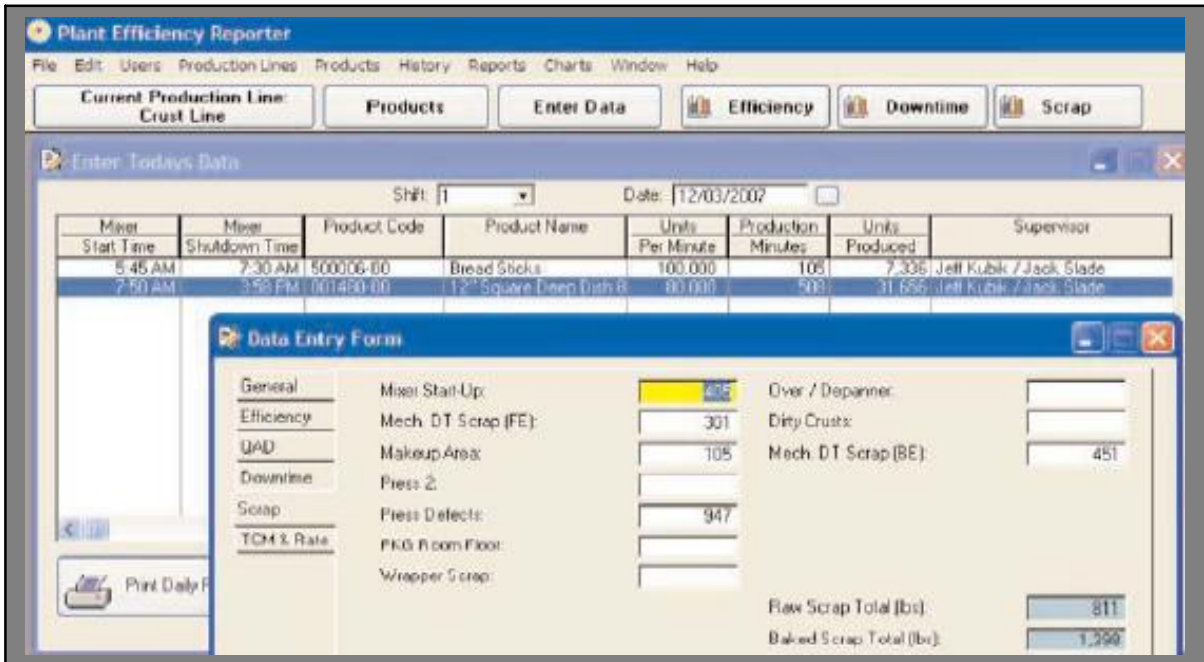
Now

Enter the Production Data



which

Consists of Counts, Downtime, Scrap and Even Labor



The Result is....

Daily Production Reports

Report Preview [hp LaserJet 1320 PCL 6 on hpLaserJet1320series]

Run: 1/14/08 4:05PM Page: 1

CRUST LINE PRODUCTION REPORT

Production Supervisor: Jeff Kubik / Jack Slade
 Date: 12/03/2007 Shift: 1
 Product: Bread Sticks / 12" Square Deep Dish 80
 Product Code: 500006-00 / 001480-00

PRODUCT STANDARDS

Product Name	Budgeted Eff. (%)	Product Weight ozs	Units / Min. Rate	Maint. DT	Prod. DT	San. DT	Log. DT	CO DT	R&D DT
Bread Sticks	85.00%	14.7	100.000	8.00%	2.00%	0.75%	0.75%	0.75%	0.00%
12" Square Deep Dish 80	75.00%	18.5	80.000	8.00%	2.00%	0.75%	0.75%	0.75%	0.00%

EFFICIENCY

Total Mixer Min.	Total Actual Mixer #'s	Theoretical Mixer #'s	Mixer # Variance	Lost Mixer Efficiency	Total Units Produced	Total Pounds Produced	Product Efficiency (%)	Plant Efficiency (%)
513	48,276	42,678	-3,598		38,992	43,341	79.10%	76.52%

DOWNTIME

Prod. Minutes (CO+LSE+R&D)	Total Min. of DT	DT Min. Documented	Maint. DT min. %	Prod. DT min. %	Breaks DT min. %	San. DT min. %	Log. DT min. %	CO. DT min. %	R&D. DT min. %	Unaccounted DT min. %
613	100	101	74 12.1%	7	0	0	50 8.16%	20 3.26%	0	1 0.16%

SCRAP

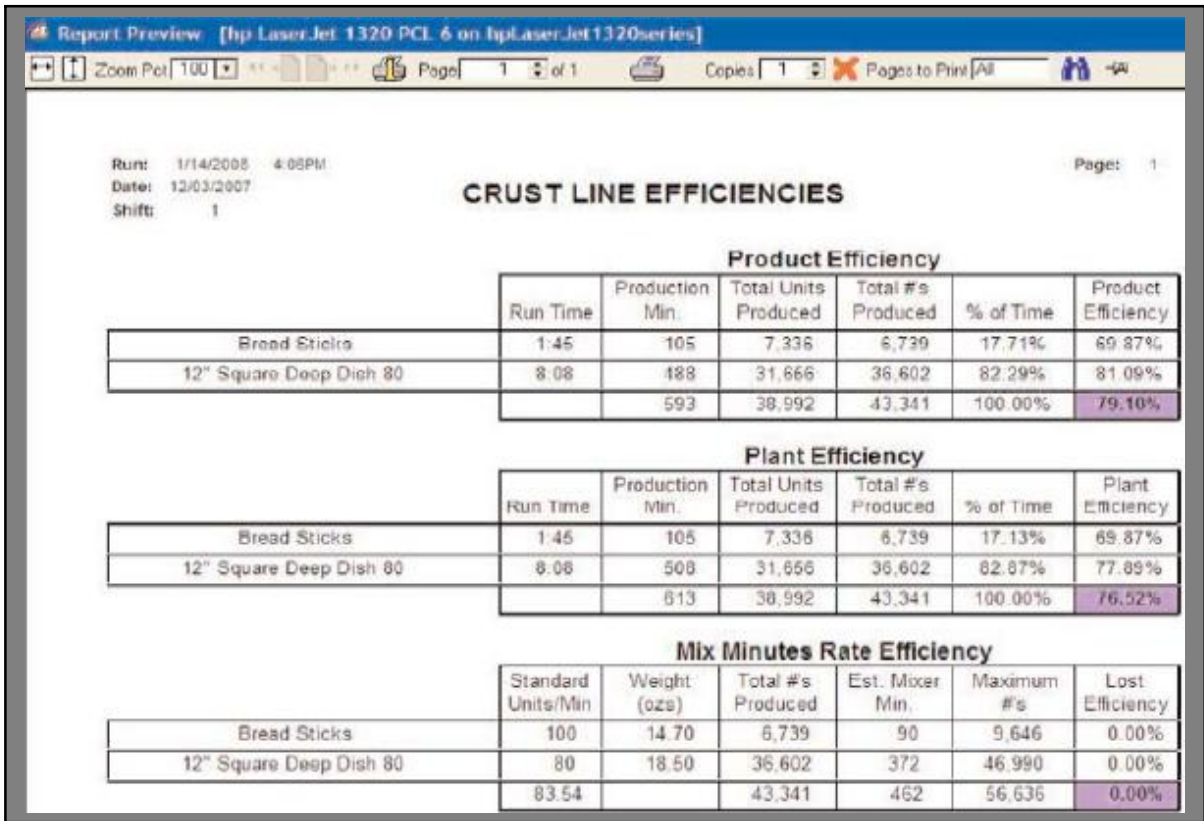
Mixer Start-Up	Mech. DT Scrap (FE)	Makeup Area	Press 2	Press Defects	PKG Room Floor	Wrapper Scrap	Over / Dumper	Dirty Crusts	Mech. DT Scrap (BE)	Raw Scrap Total (lbs)	Baked Scrap Total (lbs)	Total Scrap (lbs)	Total Actual Scrap (lbs)	Scrap Variance (lbs)	Scrap Rate
470	301	153	15	1050	0	0	0	0	451	939	1,501	2,440	2,933	493	6.77%

LABOR

Actual Labor	Standard	Variance

RATES

# of Pan Rate	Average Pan	Units / Min	Lost / Gained



With Complete Drill-Down Graphics

